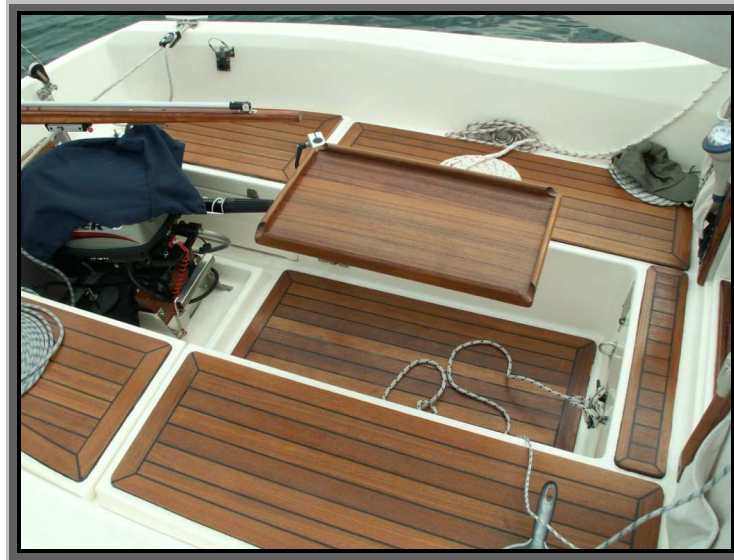


Installation of table in Cockpit and Cabin using a "Lagun" table Mount

By Simon Head

(There are also some photographs with narrative at the end of this document)

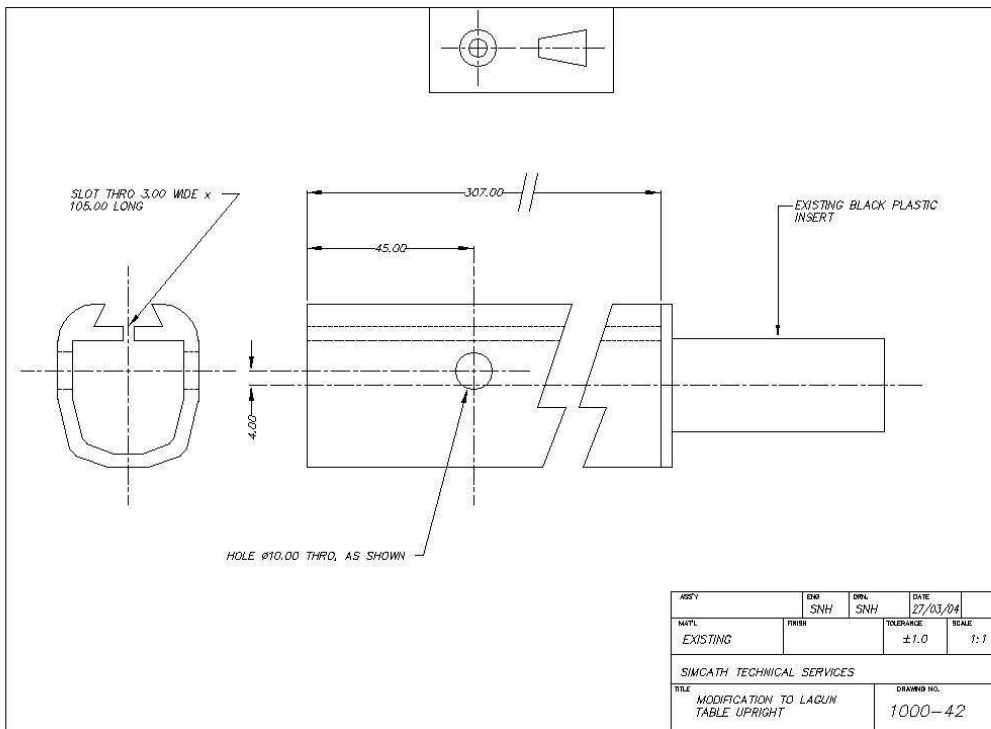


The quality engineered aluminum 'Lagun' mounting bracket is an ingenious solution to mounting a table in the confines of a small boat like the Cape Cutter 19. With variable heights and twin swivel points the table can be moved into position or folded away very quickly. To make use of the table in two positions (the cabin and cockpit), an additional mounting plate can be purchased to allow the table to be mounted in another position.

When I looked at installing a table in my Cape Cutter there was not really an elegant solution that would suit both modes of operation- there were those that were designed for use within the cabin and those for use in the cockpit. The "Lagun" being alloy offered a solution to both scenarios.

I purchased the frame from KJ Howells (<http://www.kjhowells.com>). The table I used was a smaller fixed top (610L x W 355), again from KJ Howells. They also offer deals which include the table mount and table top.

The table leg had to be modified as per the following drawing:



Cockpit Mount

To fit the mount in the cockpit is very easy. All fastenings come within the kit- 4 holes are drilled through the wall of the cockpit with a matching wooden backing plate being used to reinforce the installation from inside the cabin. I replaced this with a piece of teak as the standard backing plate was made from a condensed wood fibre material. The only other change I made was with the addition of dome nuts to finish the job off in the cabin.

The frame kit comes with a plastic packing wedge which must be used between the cockpit gelcoat and the aluminium plate to bring the mount vertical, as there is a slight draft angle in the wall of the cockpit to aid its extraction from the mould.

The only other thing to do is to use plenty of Sikaflex to seal the assembly!

Cabin Mount

This is a slightly more complex mount as I mounted it on the forward port side of the centreplate.

I have a South African Cape Cutter which has a reinforcing strip either side of the centre plate housing. I had to take a hardboard template of this to determine how much material to remove from the mounting block. I bought a cheap router from B & Q to remove this material- the results were pretty remarkable considering I have never used one of these devices (I was originally a mechanical engineer so I am more used to milling machines!). I even managed to put some fancy edging to the block of wood!

I milled out 4 holes on the inside face and mounted some 316 stainless steel claw nuts to accept machine screws. Self tapping screws could be used, but I preferred to use the machine screws which came with the second mounting plate kit.

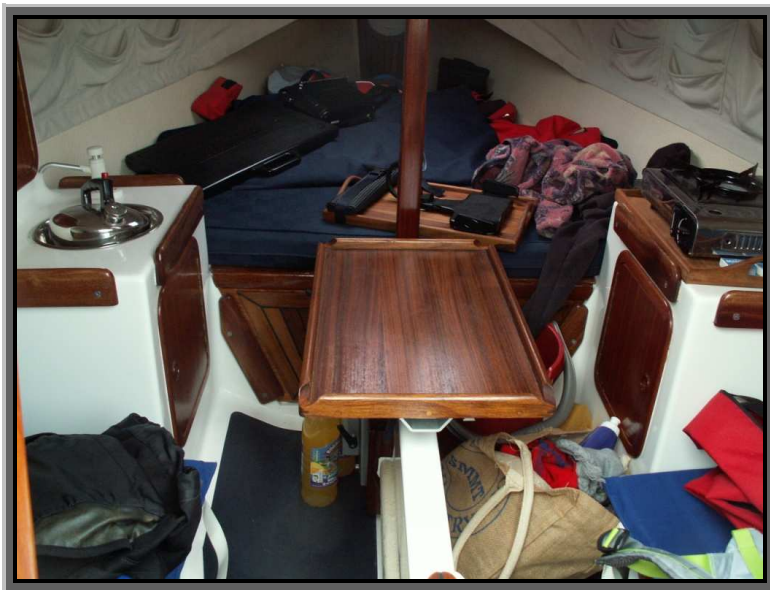
Prior to bonding the block of wood to the case I ensured that the screws did not protrude from the face of the block when screwed up tightly. This requires some hacksaw work! Again one of the plastic wedges has to be used which is included in the mounting kit to bring the mounting plate vertically.

To bond the block of wood I used plenty of Sikaflex 292- using 2 pieces of wood, one on the mounting block, the other on the cupboard moulding to get a good bond- using a car scissor jack to apply pressure to the bond.

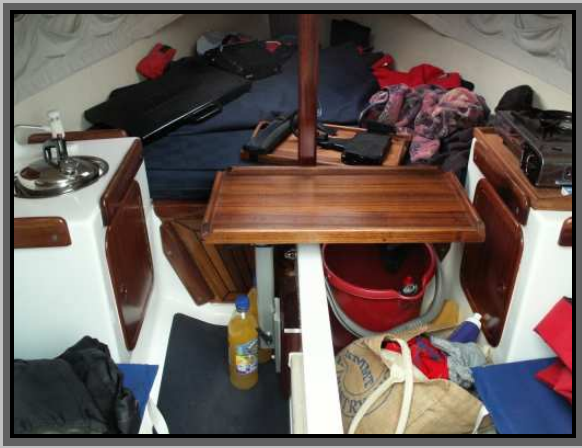
Other modifications which are worthwhile!

In the cabin mount I drilled and tapped a M6 hole for a M6 cap head screw in the track that the mount bracket slides down to provide a stop for the table. This stops any possibility of the cabin floor being damaged by the table being lowered too far.

I also put rubber stops under the table mount to protect the top of the centre plate casing from any possibility of getting scratched.



Above: The table in place in the cabin. It may be easily removed, stowed or rotated out of the way as shown below



Above the table can be moved around or totally stored



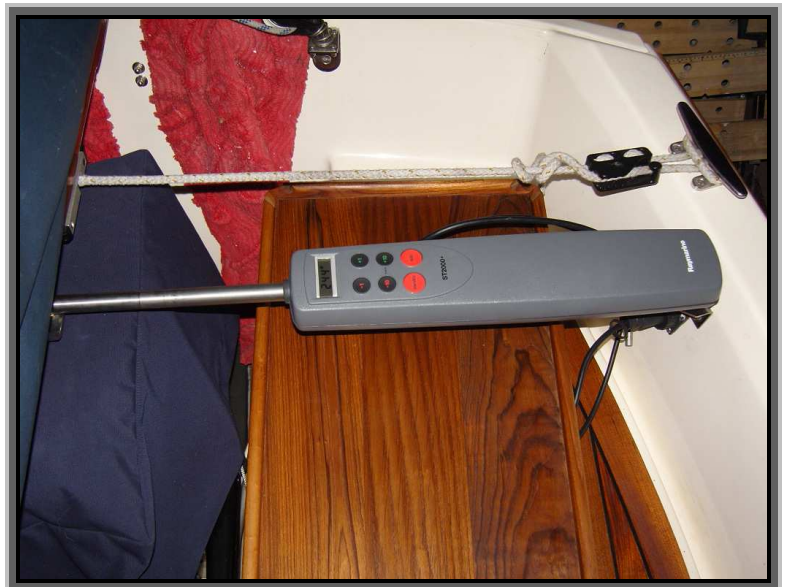
Above the cabin mount with table stowed. The stop screw mentioned in the narrative can clearly be seen



Above: The mounting block prior to bonding. This was prior to machining the stop shown above. The recessed stainless steel claw nuts can be clearly seen in the right hand picture.



Above: In the cockpit the table may be stored while sailing. It covers the locker I keep the outboard fuel tank in so is not normally opened at sea. This locker top is dead space



Above in sailing mode the table can be dropped so as not to interfere with my tiller pilot!



Above: As the table may be swiveled around it is an ideal tool to rest my solar panel briefcase on when the table is not being used for its purpose. With being able to swing it is ideal to set it at an optimum position to the sun!